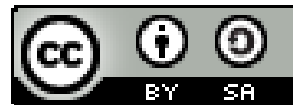


How will Humans Evolve in the Future?

Hyeon Kim

Professor of Cultural Informatics
The Academy of Korean Studies

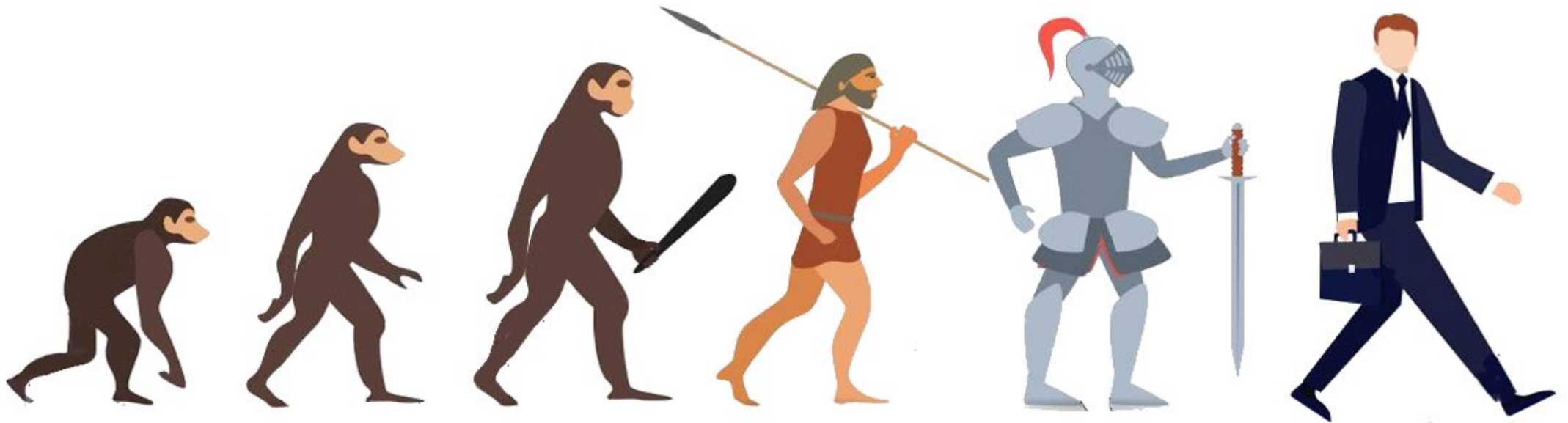
hyeon@aks.ac.kr



How to cite this creation (PPT):

Hyeon Kim, *How will Humans Evolve in the Future*, Special Lecture at 2021 APHEN-ICH Field School:
Posthumanism and ICH, 2021. 8. 16.

Process of Human Revolution



What will be the next?



Like this?



In the past, aliens or future humans were portrayed like this. People thought that future humans' heads would grow this much bigger because they will develop much more intelligence.

Is that so? I don't think so.


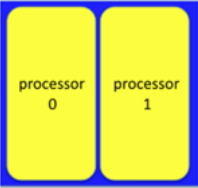
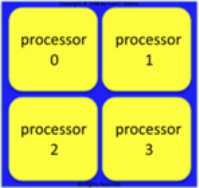
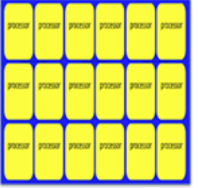









The human body will evolve into a more beautiful and balanced form. Because people wish to be.

So what about the human brain?

I don't think the brain of human individuals will change much. Because they don't have to.

Human intelligence will evolve in a different way.

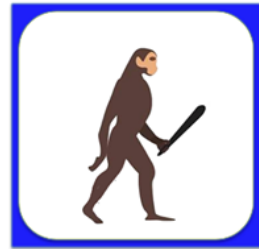
History of Microprocessor Evolution

Single Core Processor					Multi Core Processor					
 <p>single core CPU</p> <p>1971~</p>					 <p>dual core CPU</p> <p>2006~</p>		 <p>quad core CPU</p> <p>2008~</p>		 <p>16 core CPU</p> <p>2017~</p>	
 <p>i4004 1971</p>	 <p>i8088 1979</p>	 <p>i80286 1982</p>	 <p>i386 1985</p>	 <p>i486 1991</p>	 <p>Pentium 1985</p>	 <p>Pentium Dual-Core 2006</p>	 <p>Core i7 2008</p>	 <p>Core i9 Extreme 2017</p>		

Will it be possible to think like this?

Single Core Human

Multi Core Human



Of course, it's not possible to make it physically happen.



single core Human

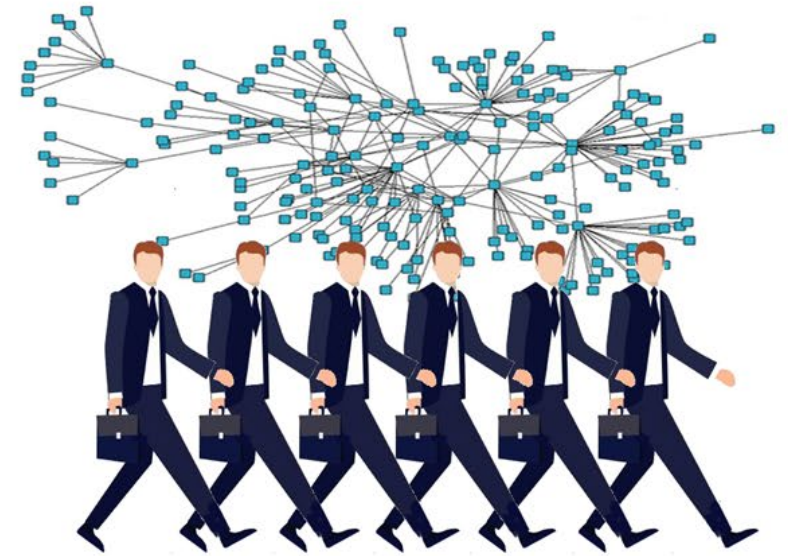


multi core Human

However, isn't this illustration similar to the previous one?



Human



hyper-connected Human

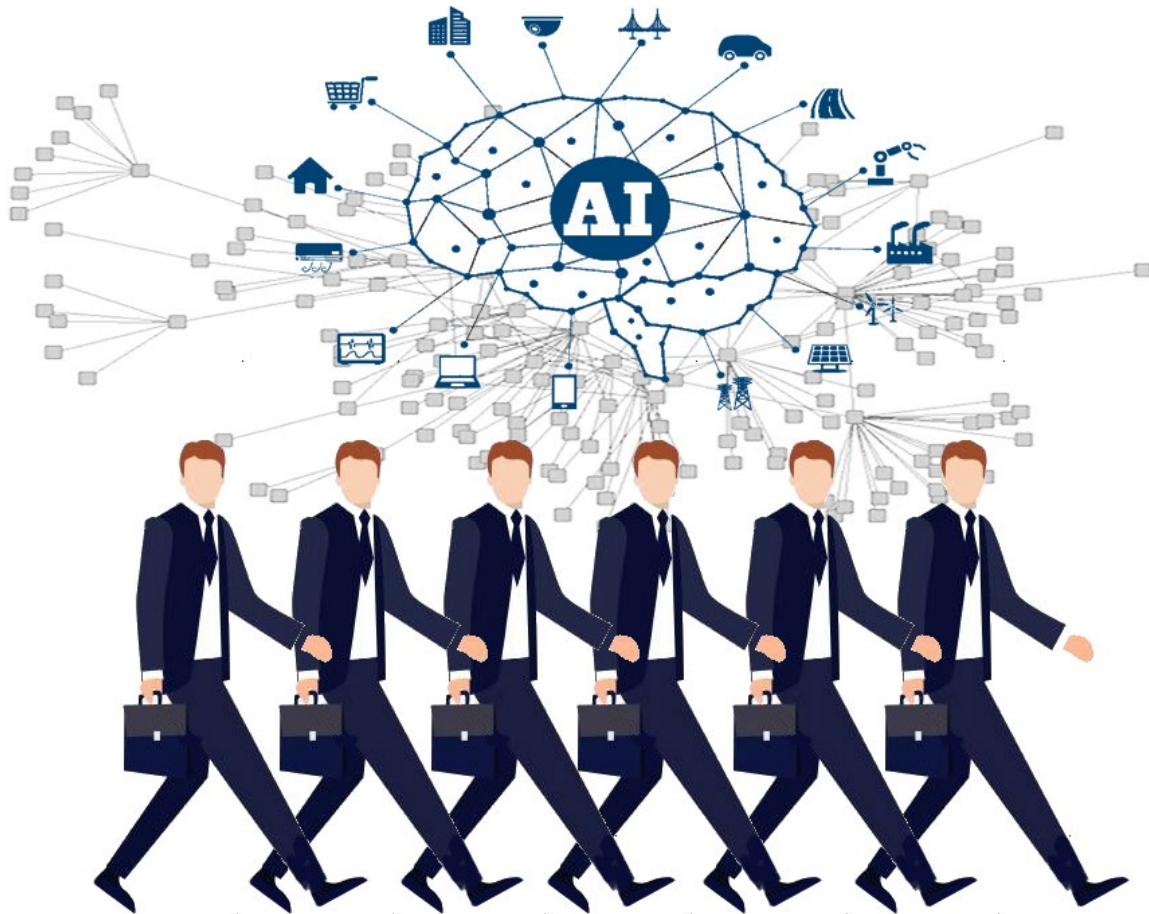
Hyper-connected Human Beings



People are already living in various data networks that connect human to human, object to object, and human to objects.

The network that connects humans and objects is not just blind collection of separate pieces of information

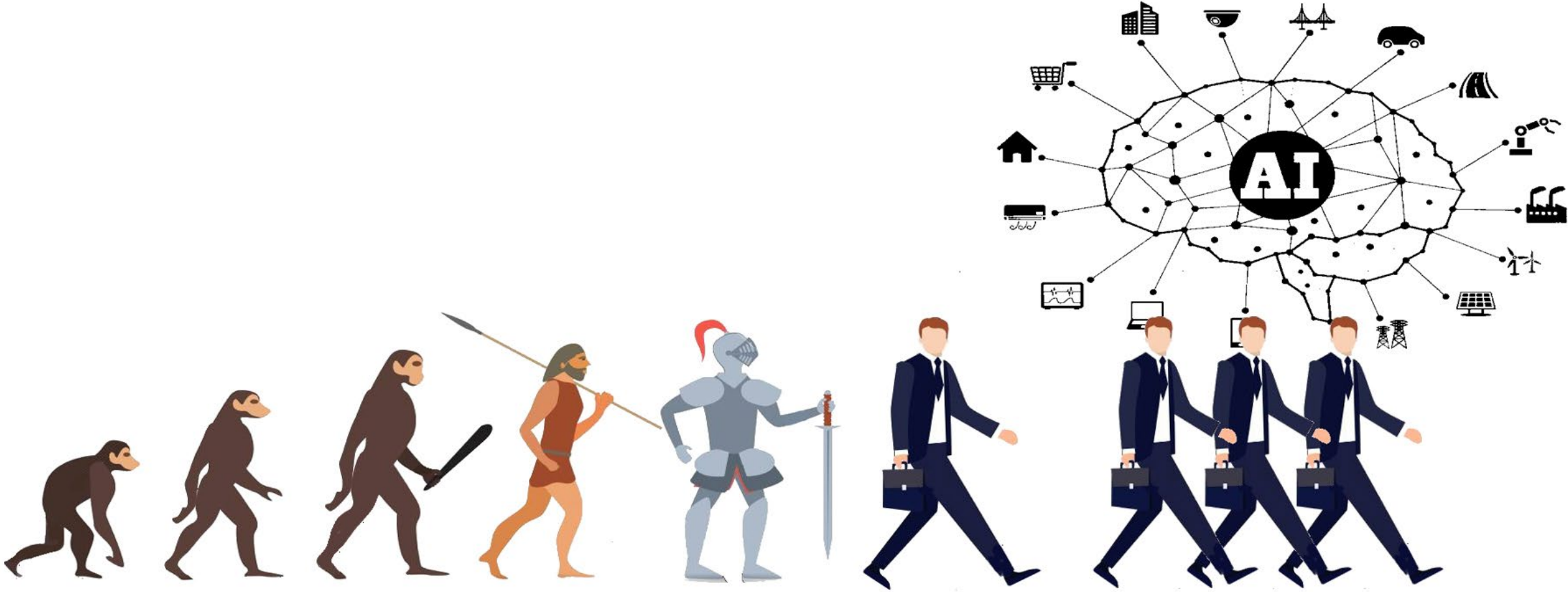
However, isn't this similar to that?

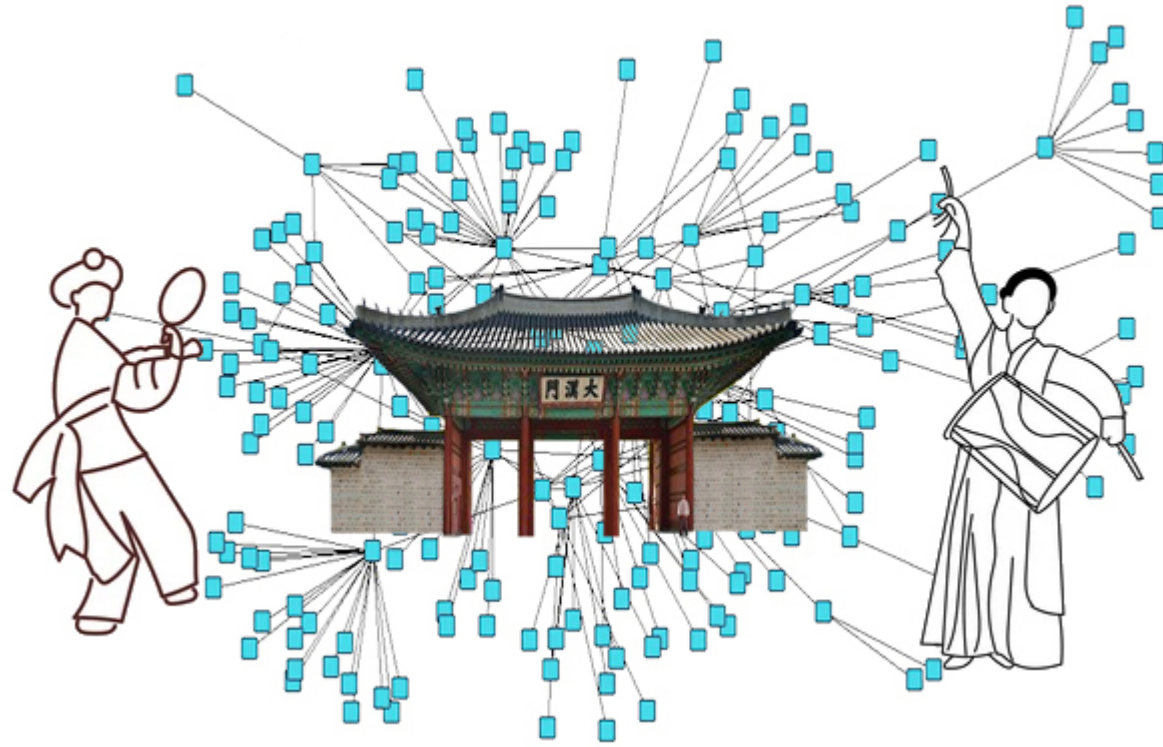


In many data servers, artificial intelligence (AI) works to aggregate, analyze, and synthesize the knowledge and information provided by countless individuals.

In this way (by the co-existence with **data**, **networks**, and **AI**), humans in the future will be able to live a more intelligently evolved life.

AI is a new method of human evolution chosen by humans





Link: Learning “Culture” in the Post-human Era